

ID 19471
Products Programmable Controllers MicroLogix 1000 (1761) MicroLogix 1200 (1762) MicroLogix 1500 (1764) SLC500 (1747)
Category (optional) General
Date Created 03/07/2001
Last Updated 02/12/2007
Access Level Everyone
Prev. TN# A19666

Change The Operating Mode And Transfer Memory Module Of SLC Or MicroLogix With PanelView

Question

Change the operating mode and transfer memory module of SLC or MicroLogix with PanelView.

Answer

Note using RS232 (DH485) PROTOCOL ONLY.

PanelView 300 MICRO, 550, 600, 900, 1000
Firmware Release 3.30 and above.

FIXED 5/01,5/02 use 1747-M1 or 1747-M2 EEPROM.

5/03.5/04,5/05 use 1747--M11, M12, and M13 EEPROM

MicroLogix 1100 use 1763-MM1
1200 use 1762- MM1 or1762-MM1RTC
1500 use 1764-MM1 or 1764-MM1RTC

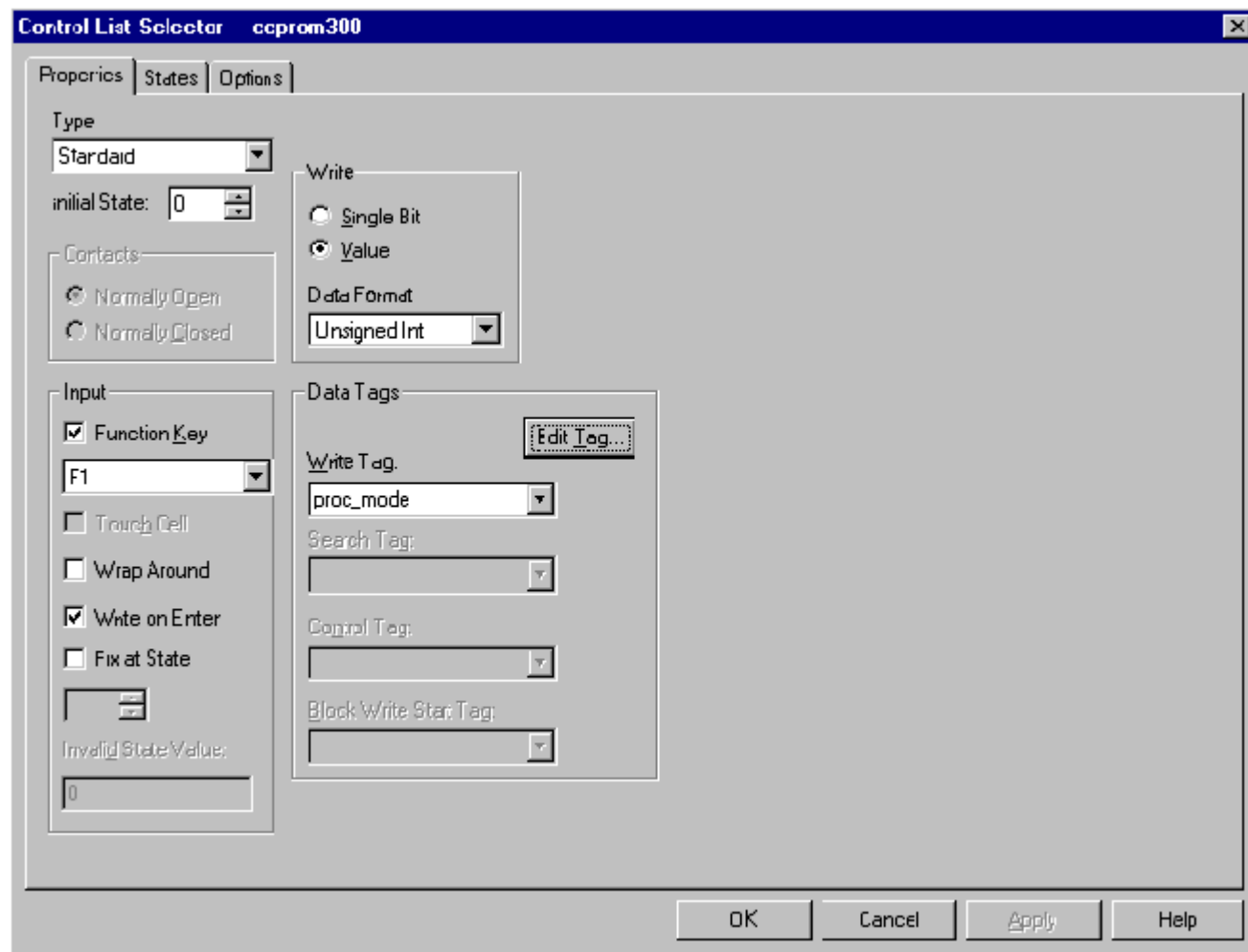
Steps in setting up mode changing and transfer program form and to EEPROM, using PanelView DH485 displays:

- 1)In RSLogix 500 you must first store program to EEPROM:
 - Go online to processor ,go to COMMS to EEPROM to Store to EEPROM.
- 2)Start with PanelBuilder Software :
 - Add an Objects to Control List Selectors to Standard.
 - Data Format : Unsigned Int

ATTENTION



- Setup Data Tags: Edit Tag
- 1.Tag Name =proc_mode
- 2.Date Type = Bit Array
- 3. Array Size = 4
- 4. Tag Address =S:1/0



- Setup the States: Message Text / Value
 - 1.Program Mode / 1
 - 2.Run Mode / 6
 - 3.Store CPU to EEPROM / 14
 - 4.Store EEPROM to CPU / 15

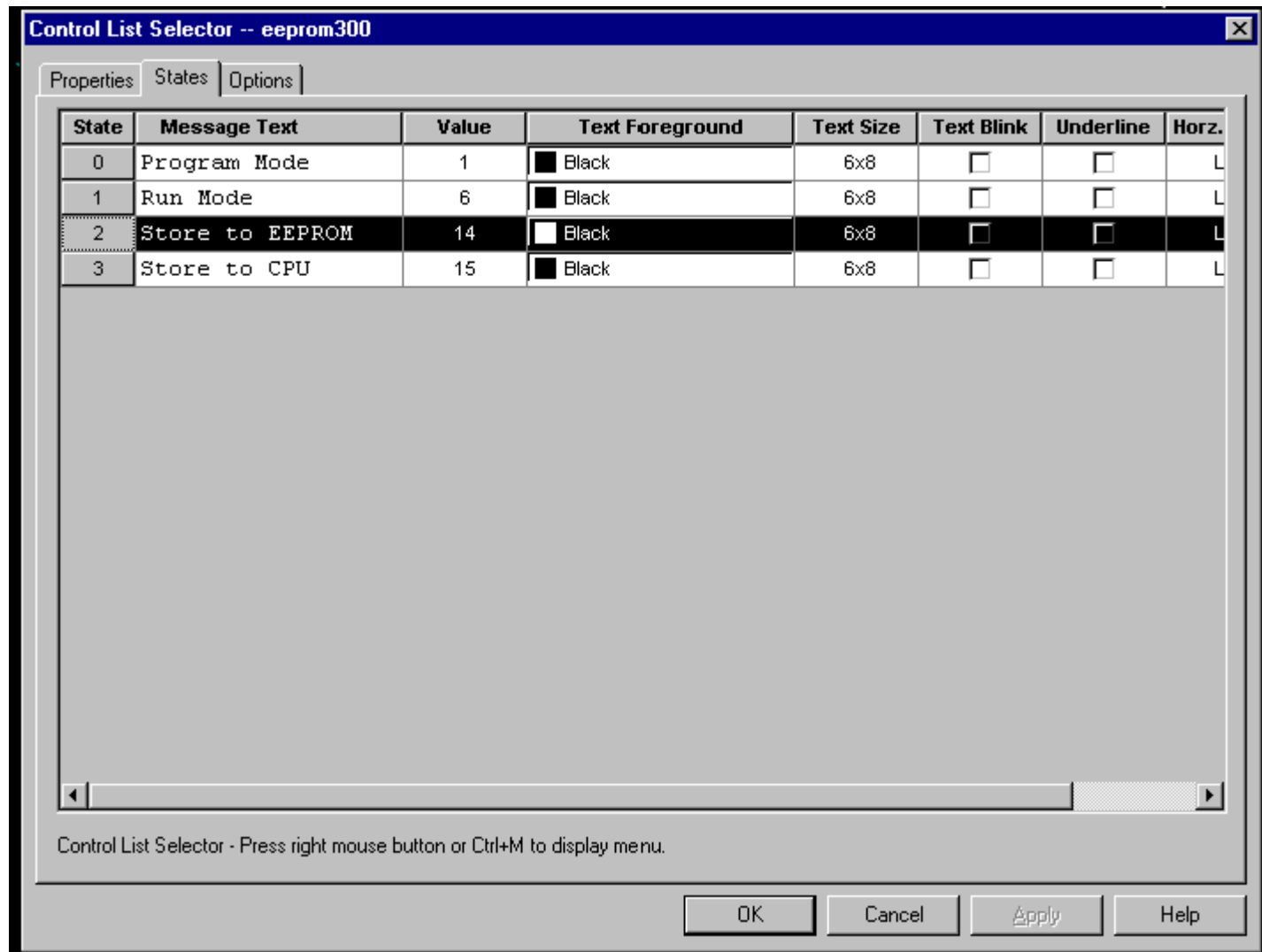
Tag Form [?] [X]

Tag Name: Data Type:

Description:

Node Name: Tag Initial Value:

Tag Address: Update Frequency: Array Size:

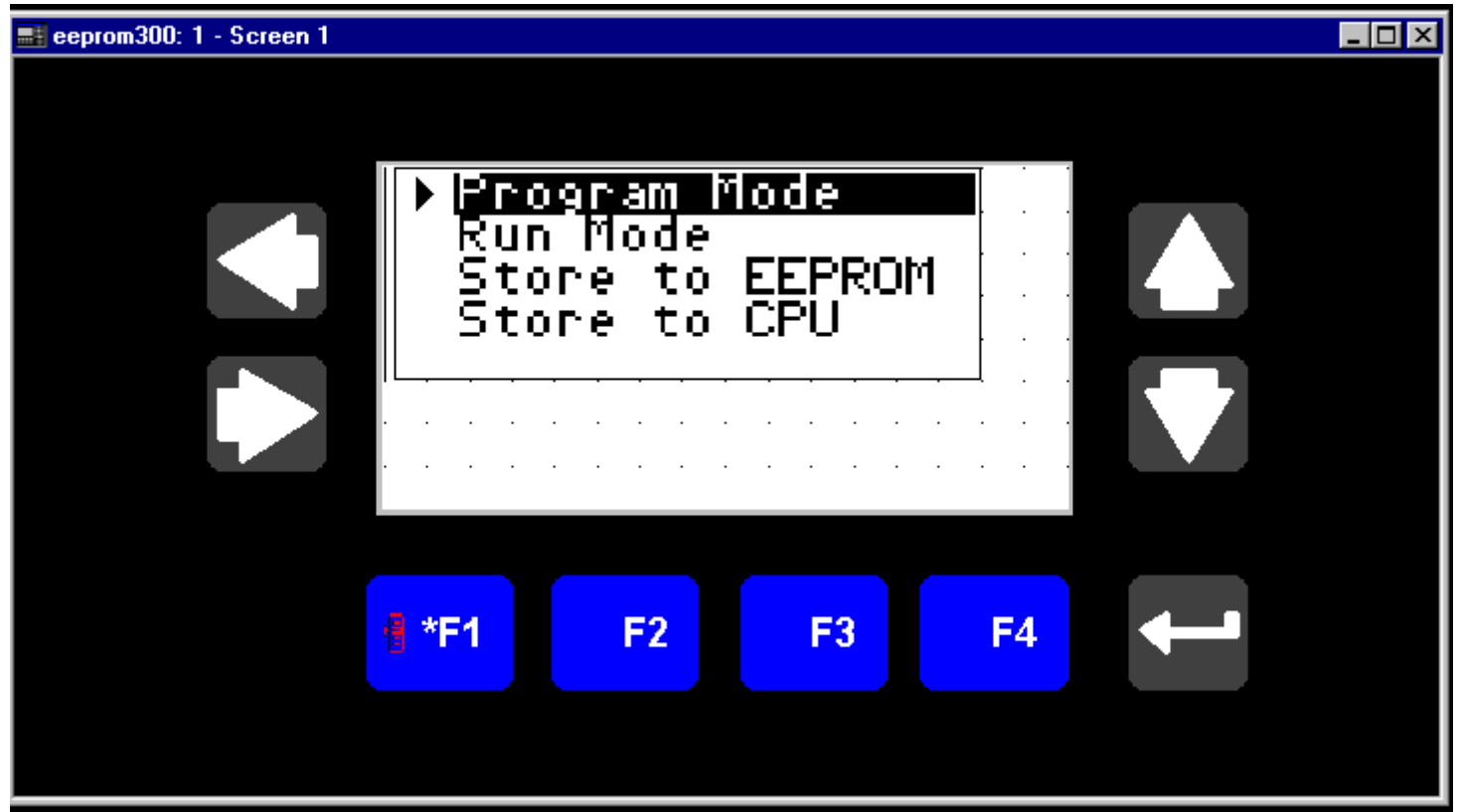


- 3) Check Application to Settings then Comms. Setup
 - Terminal Node = 2
 - Address Baud Rate = 19200
 - Network Nodes :
 1. Node name = SLC
 2. Node Address = 1
 3. Node Type = SLC 5/01 (for Fixed units)

- 4) For transfer from CPU to EEPROM and EEPROM to CPU.
 - Processor must be in program Mode.
 - All other comms must be offline to processor. (RSLinx)

·Select active node on network.

- 5)EEPROM Must be installed ,if not installed it will get ERROR Codes or program mode:
·216and 208 - unable to write remote device.



M.

Catalog Number:

1747L20C;1747L514;1747L524;1747L532;1747L542;2711B5A2;2711B5A3;2711B5A5;2711B6C2;2711B6C3;2711B6C5;2711B6C9;2711K
L16AWA;1763-L16BBB;1763-L16BWA

DocFullNum: A19666

Revision:
Fixed in Revision:
Package:
Modual:

This knowledge base web site is intended to provide general technical information on a particular subject or subjects and is not an exhaustive treat your equipment, you should consult a qualified professional advisor.

ROCKWELL AUTOMATION DOES NOT WARRANT THE COMPLETENESS, TIMELINESS OR ACCURACY OF ANY OF THE DATA CONTAINED
ROCKWELL BE LIABLE FOR ANY DAMAGES OF ANY KIND INCLUDING DIRECT, INDIRECT, INCIDENTAL, CONSEQUENTIAL, LOSS OF PROFITS

ROCKWELL AUTOMATION DISCLAIMS ALL WARRANTIES WHETHER EXPRESSED OR IMPLIED IN RESPECT OF THE INFORMATION (INCLUDING
exclusion of implied warranties; thus, this disclaimer may not apply to you.

File Attachments

-  [eeprom300.exe](#)